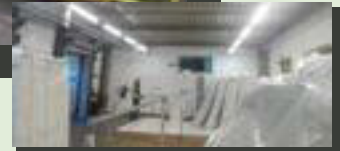


## Furniture Manufacturer

**Sector:** Medium-sized manufacturers running a one or two shift operation (not 24/7)

**Requirements:** To reduce electricity consumption  
**Services provided:** ESOS Energy Audit Report advising behaviour change  
**Provider:** Mulholland Energy  
**Achievements:** **25.4% reduction in electricity** in 6 months  
**Opportunity:** Base load reduction in electricity during non-production hours by changing procedures to switching equipment on/off.



### Transferable Principles

- Use half hourly data to identify possible savings during quiet shift.
- Systematic procedures to power down lights and equipment during non-production hours.

**Critical Success Factors:** Top level commitment. Site ownership at department level  
Team work to rapidly implement standard operating procedures.

[CLICK HERE](#) for the full case study